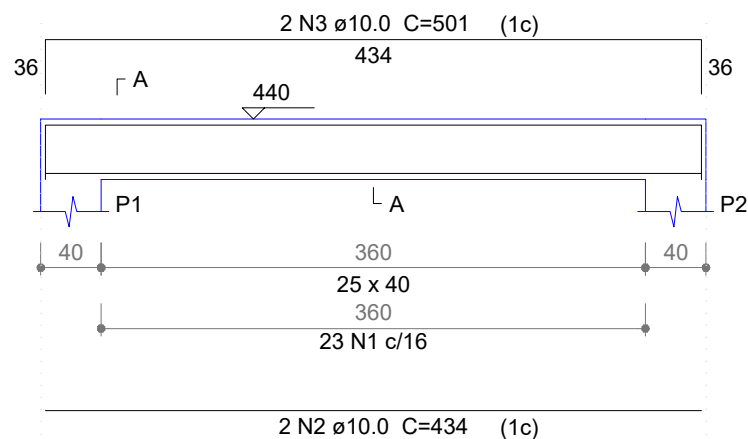
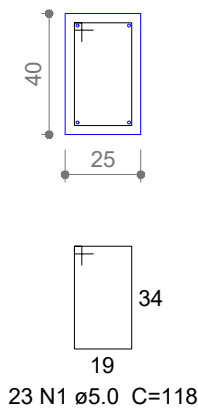


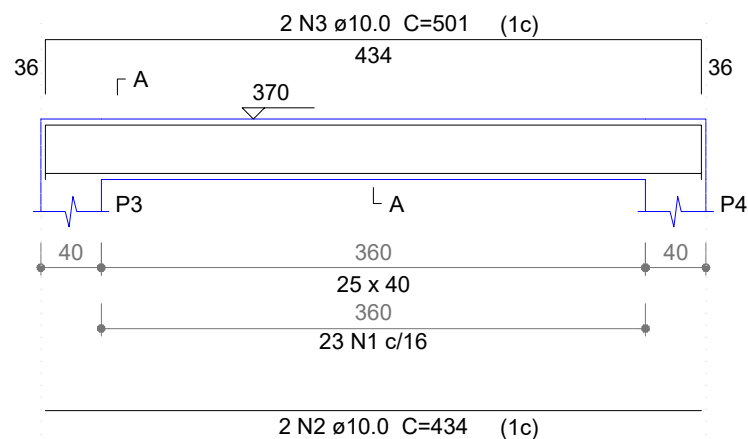
V1  
ESC 1:50



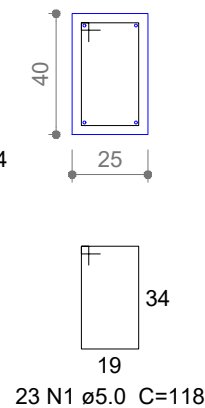
SEÇÃO A-A  
ESC 1:25



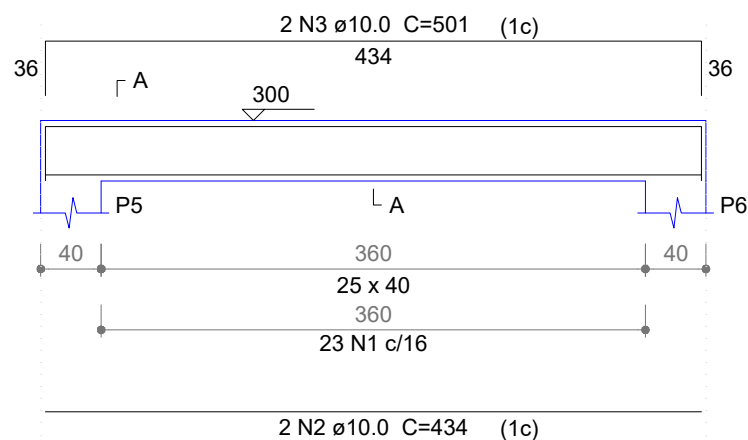
V2  
ESC 1:50



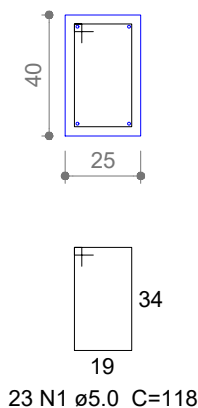
SEÇÃO A-A  
ESC 1:25



V3  
ESC 1:50



SEÇÃO A-A  
ESC 1:25



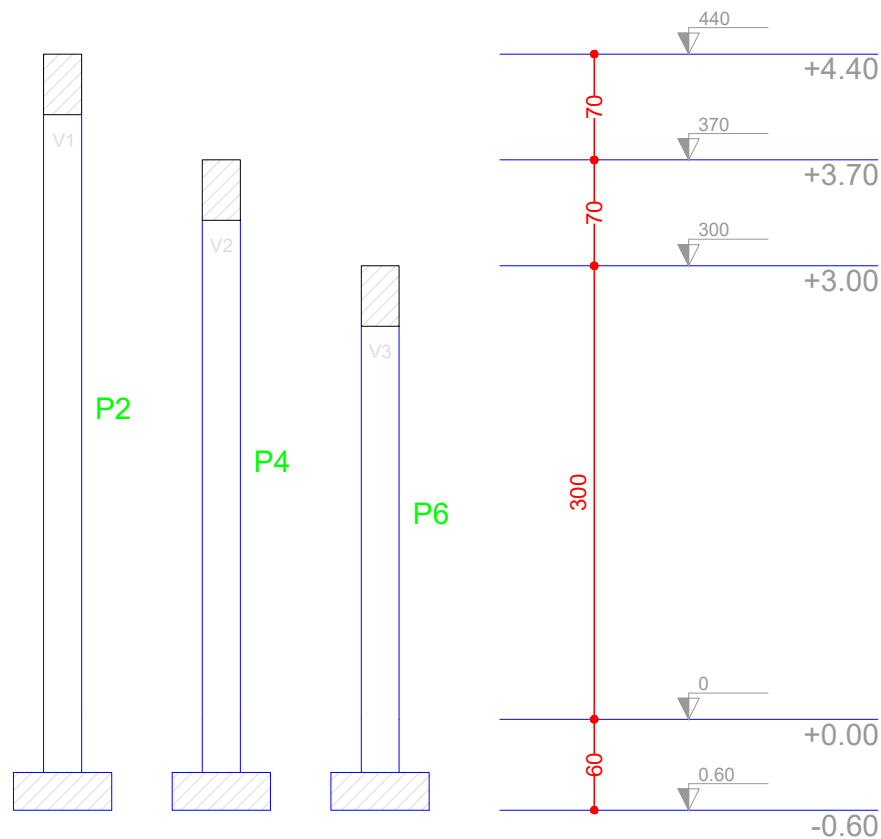
Relação do aço

| ELEMENTO | AÇO  | N | DIAM (mm) | QUANT | C.UNIT (cm) | C.TOTAL (cm) |
|----------|------|---|-----------|-------|-------------|--------------|
| V1       | CA60 | 1 | 5.0       | 23    | 118         | 2714         |
|          | CA50 | 2 | 10.0      | 2     | 434         | 868          |
|          | CA50 | 3 | 10.0      | 2     | 501         | 1002         |
| V2       | CA60 | 1 | 5.0       | 23    | 118         | 2714         |
|          | CA50 | 2 | 10.0      | 2     | 434         | 868          |
|          | CA50 | 3 | 10.0      | 2     | 501         | 1002         |
| V3       | CA60 | 1 | 5.0       | 23    | 118         | 2714         |
|          | CA50 | 2 | 10.0      | 2     | 434         | 868          |
|          | CA50 | 3 | 10.0      | 2     | 501         | 1002         |

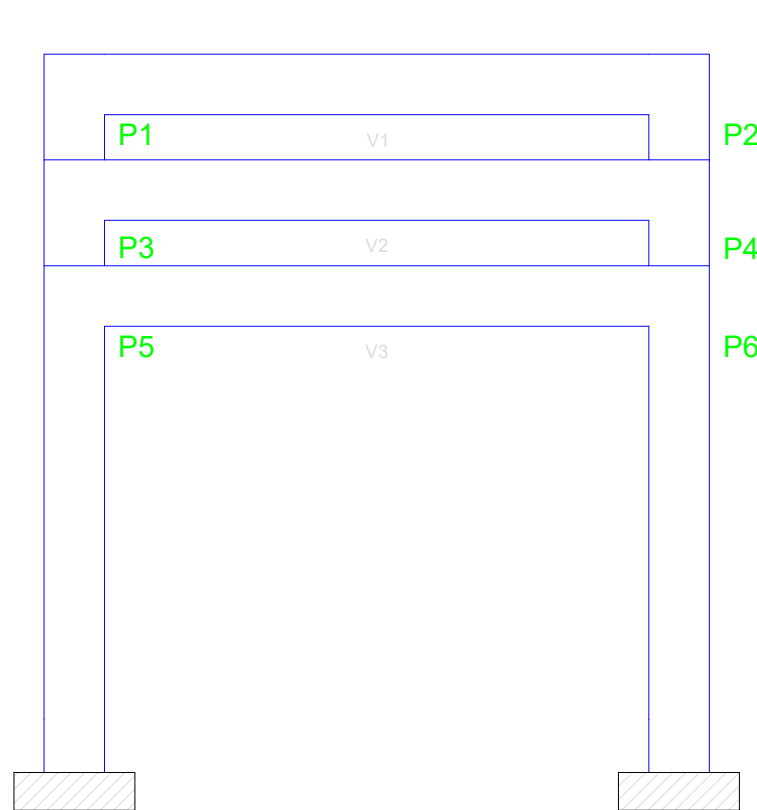
Resumo do aço

| AÇO             | DIAM (mm) | C.TOTAL (m) | QUANT (Barras) | PESO (kg) |
|-----------------|-----------|-------------|----------------|-----------|
| CA50            | 10.0      | 56.1        | 5              | 34.6      |
| CA60            | 5.0       | 81.5        | -              | 12.5      |
| PESO TOTAL (kg) |           |             |                |           |
| CA50            | 34.6      |             |                |           |
| CA60            | 12.5      |             |                |           |

Volume de concreto (C-25) = 1.32 m³  
Área de forma = 13.86 m²



CORTE A-A  
escala 1:50



CORTE B-B  
escala 1:50

Saulo Marjorie Gonçalves Silva Bezerra  
Engenheiro Civil  
CREA/CE: 330959 / RNP: 061684178-8

PROJETO ESTRUTURAL

VIGAS

resp. téc.: Saulo Marjorie Gonçalves Silva Bezerra

CREA: 330959CE

folha

escalas indicadas

Reforma da Praça Padre Cícero

4/4